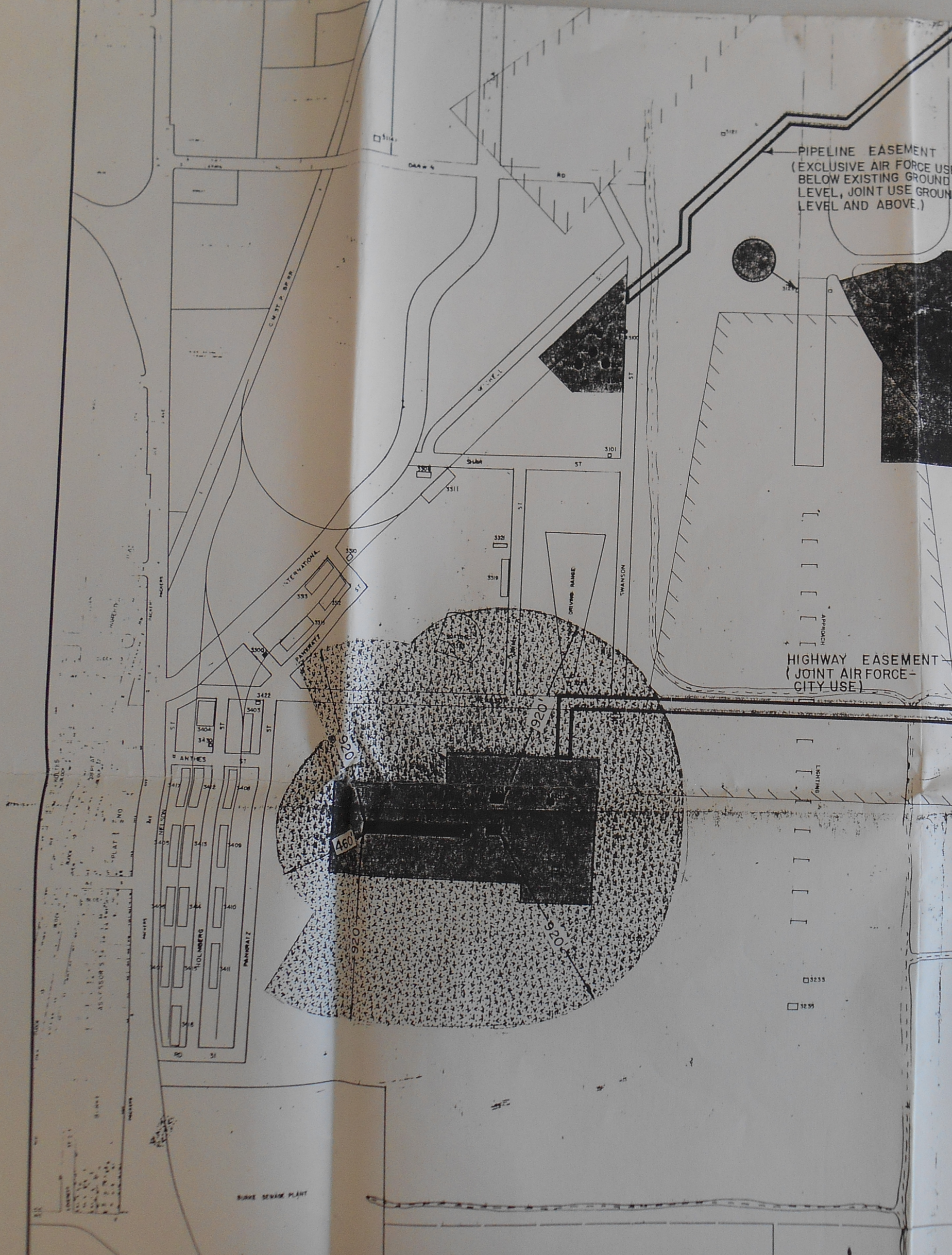
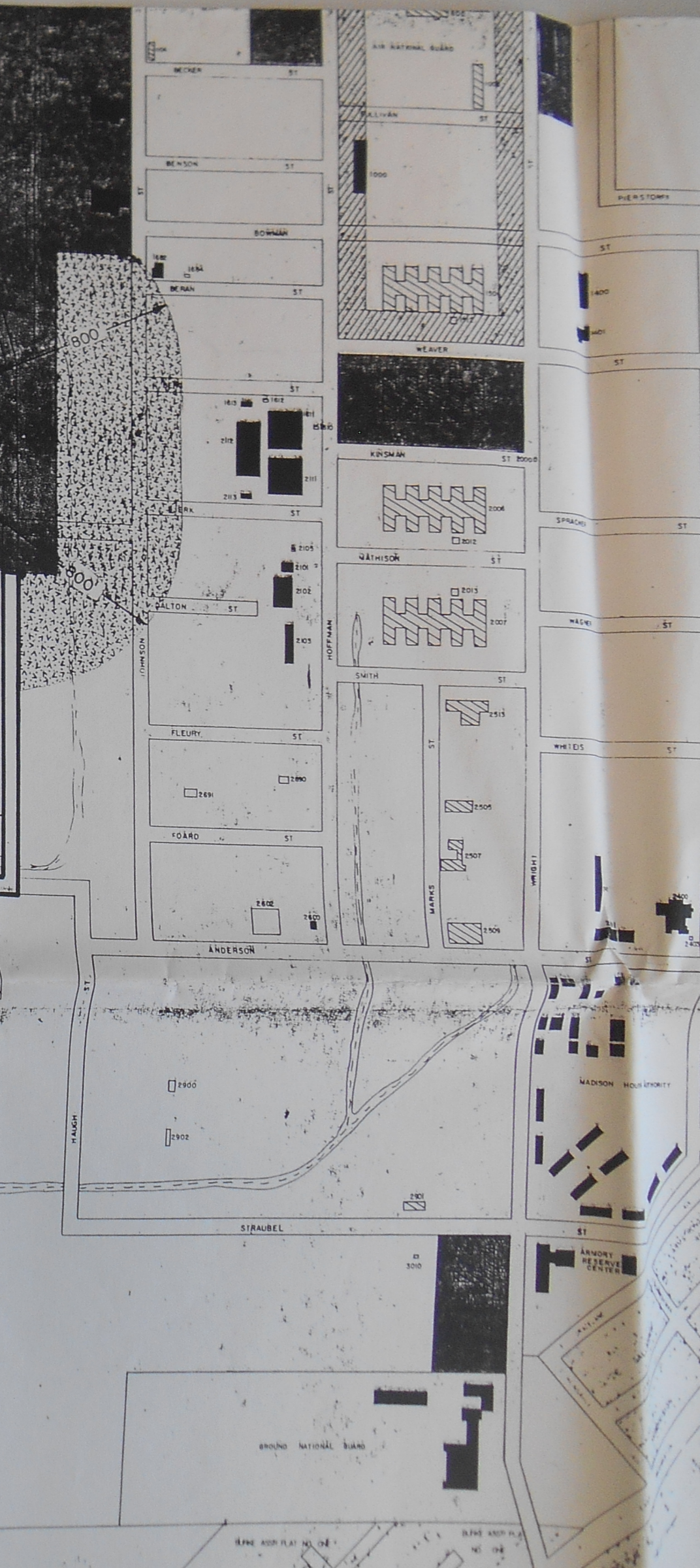
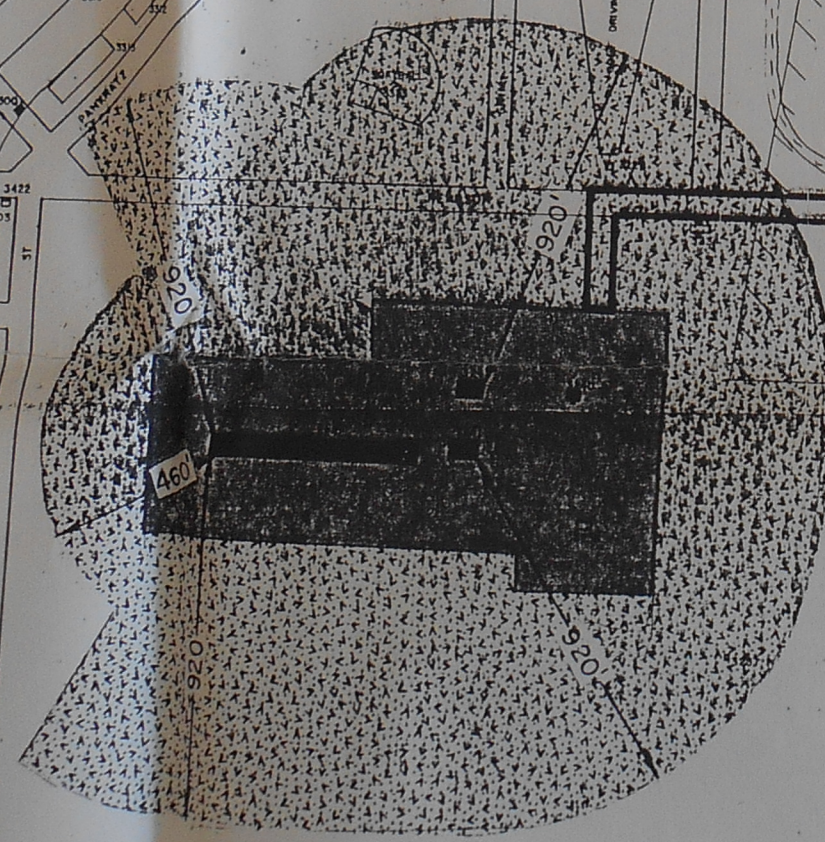
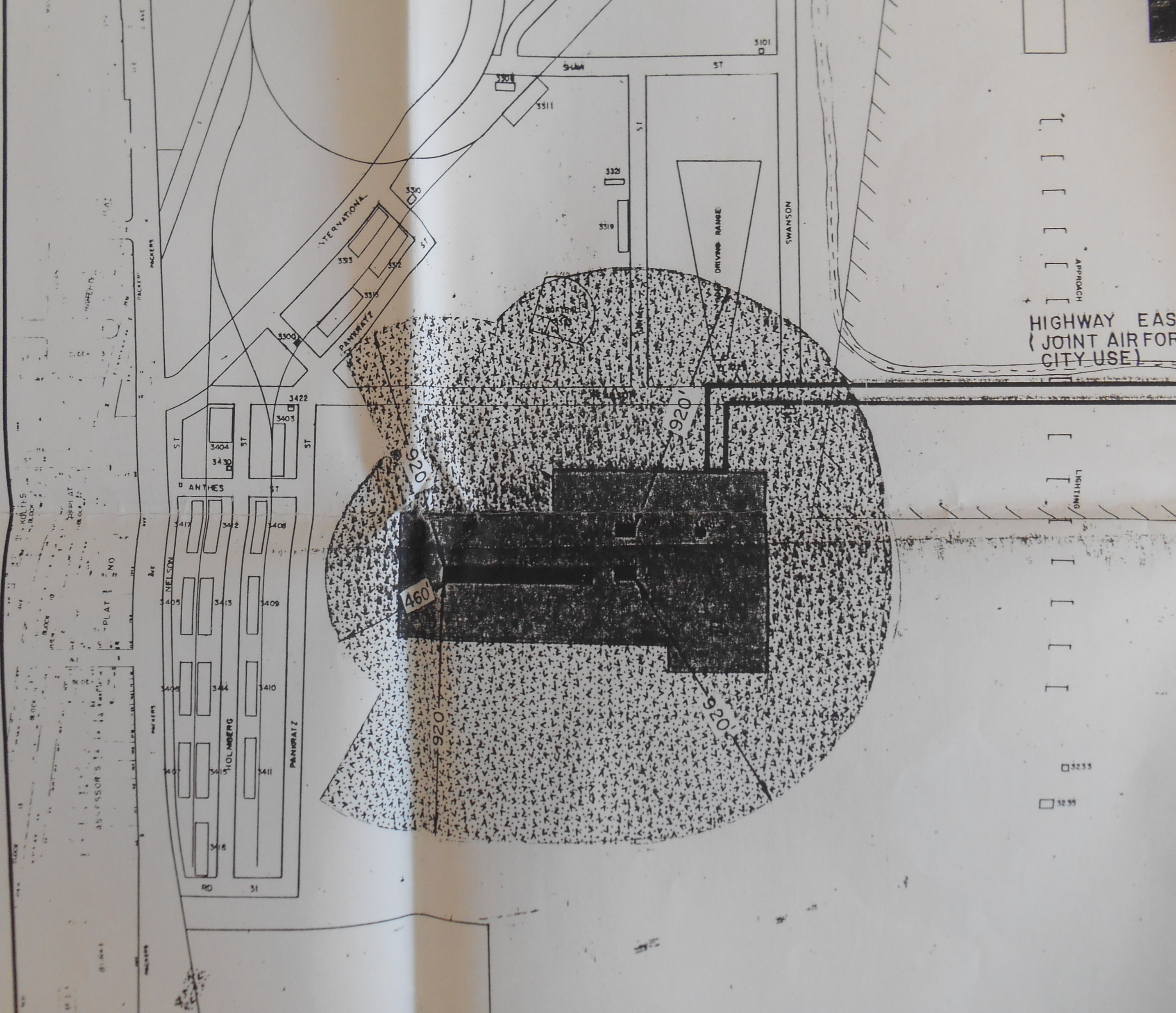


PIPELINE EASEMENT  
(EXCLUSIVE AIR FORCE USE  
BELOW EXISTING GROUND  
LEVEL, JOINT USE GROUND  
LEVEL AND ABOVE.)

HIGHWAY EASEMENT  
(JOINT AIR FORCE -  
CITY USE)





HIGHWAY EASE  
(JOINT AIR FORCE  
CITY USE)

APPROACH

LIGHTING

5255

5256

3101

331

3311

332

3319

920'

460'

920'

920'

920'

INTERNATIONAL

PANORATZ

ST

ST

ST

ANTHES

NELSON

HOLMBERG

PANORATZ

SWANSON

DRIVING RANGE

PACKERS

MAHELY

KOLTES

BLOOM

PLAT

NO

ASSASSOR'S

BLANK

ROCK

ROCK

ROCK

ROCK

ROCK

ROCK

ROCK

ROCK

ROCK

ROCK

ROCK

ROCK

ROCK

ROCK

ROCK

ROCK

ROCK

ROCK

ROCK

ROCK

ROCK

ROCK

ROCK

ROCK

ROCK

ROCK

ROCK

ROCK

ROCK

ROCK

ROCK

ROCK

ROCK

ROCK

ROCK

ROCK

ROCK

ROCK

ROCK

ROCK

ROCK

ROCK

ROCK

CORPS OF ENGINEERS  
LEASE NO. DACA22-5-69-140  
DECEMBER 1, 1968



FEDERALLY OWNED LANDS

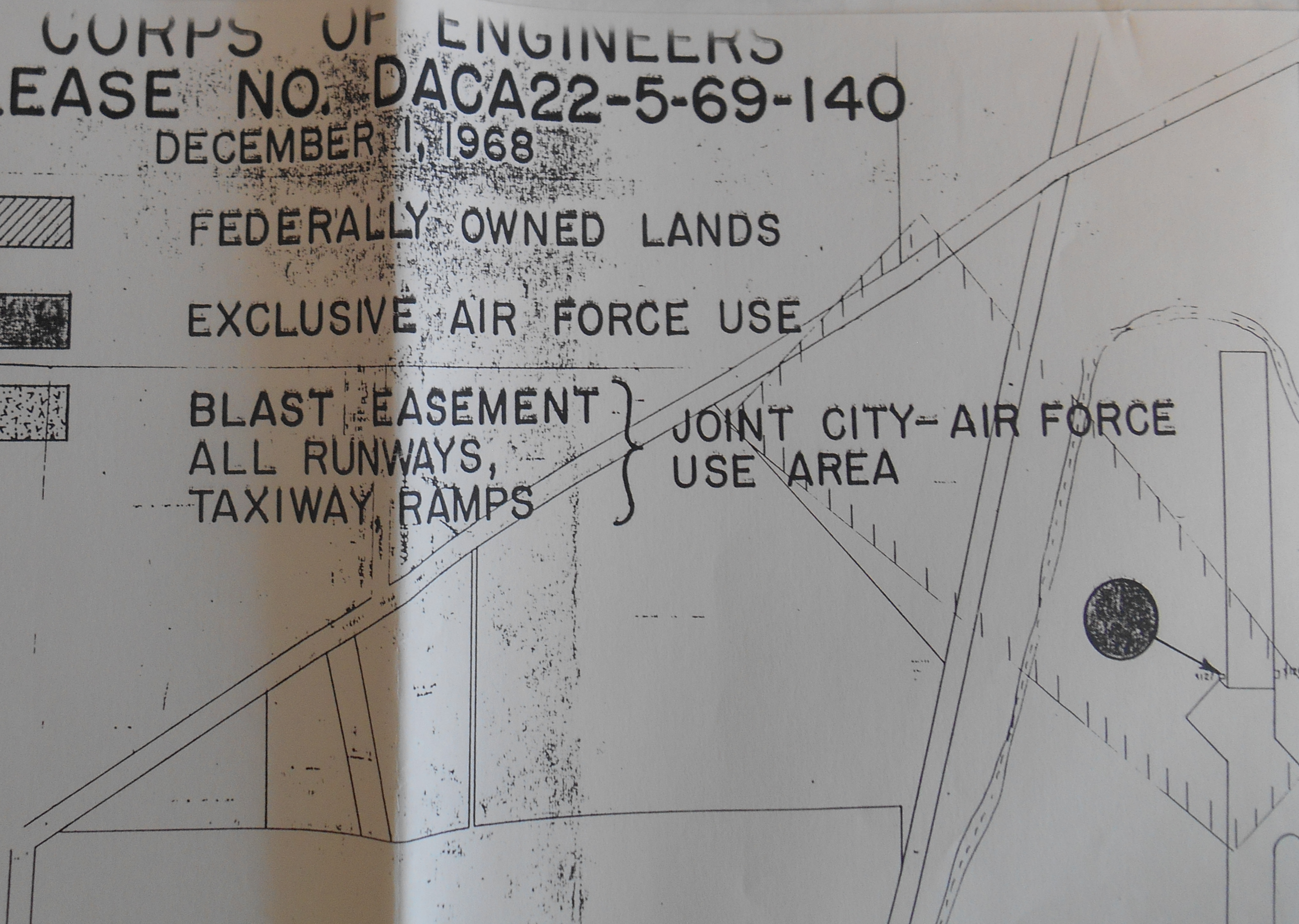


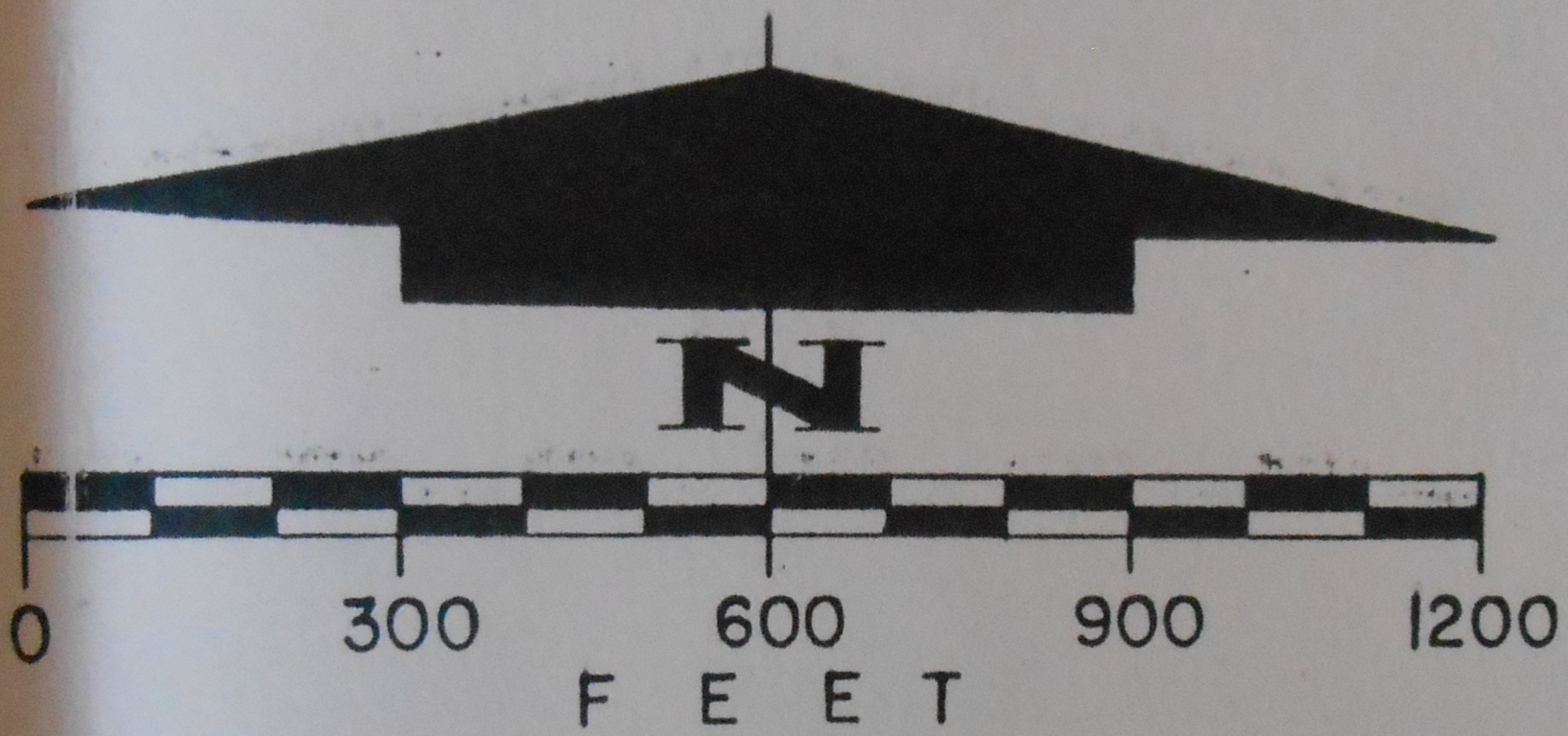
EXCLUSIVE AIR FORCE USE



BLAST EASEMENT }  
ALL RUNWAYS,  
TAXIWAY RAMPS

} JOINT CITY-AIR FORCE  
USE AREA





COMPILED FROM UNITED STATES DEPARTMENT OF AGRICULTURE PHOTOGRAPHS

C	M
P	D

CITY OF MADISON  
PLANNING DEPARTMENT

MADISON MUNICIPAL AIRPORT  
(TRUAX FIELD)

CORPORATE ENGINEERS LEASE DATA 22560140

DRAWN BY:

DATE:

SCALE: 1"=400'

REVISED: 11-6-68

AB