

TENNYSON LANE ISSUES

Property history goes back to 1969 with activities of potential concern.

1. Where did the biological research related to TSE or CWD take place? When did this occur? What diseased tissues were actually onsite and what procedures were used to handle them? What were final closure/decontamination procedures?

Biocontainment area in Building 2 (or 10)

Molecular Prionics - Bldg 2 02-06 the work had
DAN WARREN
MCM MASTERS
BOWEN
place

test methods for prion
immunoassay +
cero illeus
marketable methods - maybe
make our anti-bodies
prion material on site
serum samples for sheep
leveled to remove samples
1/2 sheep brain
from ~~both~~ samples for DNR 12 contaminated samples
Deer
my eye samples in bottles
~~alkaline~~
alkaline digestion
[Winnemago + 2nd Street]
study new lab
resort prion project
DR. BI BEIBO - prion labs

Molecular Biological Resources
immunoassay - back up arms and
legal slaughter center
late
1990's
to 2002

Conc Bldk = 5,760
 Full Bsmt = 5,760
 GFA = 11,520 SqFt
 built 1961 12' High

HAZELTON

CREMATORIUM

One Steel/Gable Roof
 Metal Bldg. Metal
 GFA = 3,212 SF
 built 1961
 12' high

ACCESS ISSUES

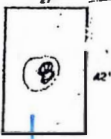
POWDERED mg DRUGS

P.E. Steel
 GFA = 1,440 SF
 built 1960
 12' high
 L.C. Steel gable roof

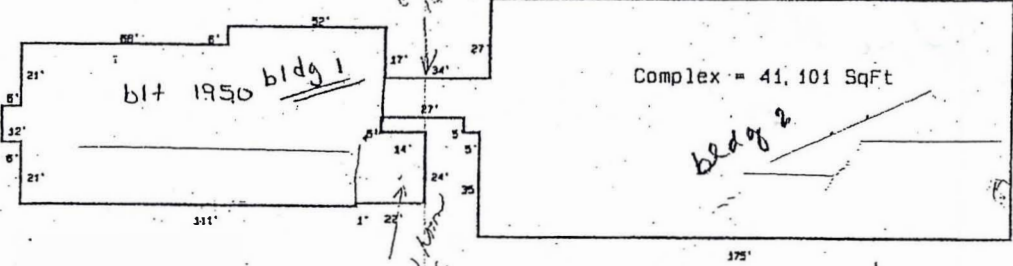
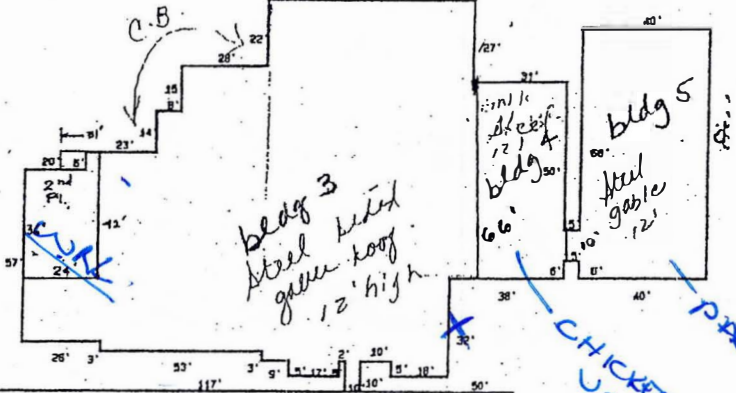
bit 1953
 12' High
 P.E. Steel
 GFA = 1,920 SF

L.C. Steel side gable roof

Conc Bldk = 1134 SqFt



MACHINE STORAGE



1" = 50'
 9-13-96
 RJT

0810-302-0101-6 1902 Tennyson Ln.

Source: Client
 10/17/02 J:\FIGURES\6201317\FIG 3.CDR

LIESCH Hydrogeologists • Engineers • Environmental Scientists
 6000 Gisholt Drive, Suite 203
 Madison, WI 53713
 (608) 223-1532

BUILDING LAYOUT
 ANCHORBANK TENNYSON & PACKERS
 1902 TENNYSON LANE
 3802 PACKERS AVENUE
 MADISON, WISCONSIN

FIGURE
 3