

- ASPHALT
- BASE COURSE
- CLAY
- CONCRETE
- SAND
- SILT
- DOLOMITE
- TOPSOIL

BORING	DEPTH (FEET)	SOIL DESCRIPTION	DEPTH (FEET)	SOIL DESCRIPTION
B19	862.02	FILL, HOT MIX ASPHALT-[4" THICK]	864	
		SILTY SAND WITH GRAVEL (SM) — FINE GRAINED, NON-PLASTIC TO LOW PLASTICITY FINES, BROWN, FILL, CRUSHED GRAVEL BASE COURSE-[26" THICK]	862	
B20		LEAN CLAY (CL) — MEDIUM PLASTICITY, BROWN AND BLACK, MOIST, MEDIUM TO STIFF CONSISTENCY, FILL, OCCASIONAL TO LITTLE GRAVEL, OCCASIONAL TO LITTLE SAND, WITH SILTY CLAYEY SAND (SC/SM) AND SILT (ML) SEAMS, MIXED WITH LITTLE TOPSOIL-[35" THICK]	860	
	859.36	FILL, HOT MIX ASPHALT-[4" THICK]	858	
		SILT (ML) — NON-PLASTIC TO LOW PLASTICITY, MOIST, LOOSE RELATIVE DENSITY, TOPSOIL-[16" THICK]	856	
		LEAN CLAY (CL) — MEDIUM PLASTICITY, GREENISH-GRAY TO GRAY, MOIST, VERY SOFT TO SOFT CONSISTENCY, OCCASIONAL GRAVEL, WITH OCCASIONAL BLACK SILT (ML) POCKETS	854	
B5		LEAN CLAY (CL) — MEDIUM PLASTICITY, GREENISH-GRAY TO GRAY, MOIST, STIFF CONSISTENCY, OCCASIONAL GRAVEL, WITH OCCASIONAL BLACK SILT (ML) POCKETS	852	
		DARK GRAY, 8'-6" TO 9'-10"	850	
		POORLY-GRADED SAND WITH GRAVEL (SP) — FINE TO COARSE GRAINED, GRAY, WET, MEDIUM DENSE RELATIVE DENSITY	848	
	862.63	FILL, HOT MIX ASPHALT-[4" THICK]	846	
B4		SILTY SAND WITH GRAVEL (SM) — FINE GRAINED, NON-PLASTIC TO LOW PLASTICITY FINES, BROWN, FILL, CRUSHED GRAVEL BASE COURSE-[18" THICK]		
	860.48	FILL, HOT MIX ASPHALT-[2 1/2" THICK]		
		LEAN CLAY (CL) — MEDIUM PLASTICITY, BLACK AND GREENISH-GRAY, MOIST, VERY STIFF CONSISTENCY, FILL-[13" THICK]		
		LEAN CLAY (CL) — MEDIUM PLASTICITY, BLACK AND GREENISH-GRAY, MOIST, STIFF CONSISTENCY, FILL, ? WITH OCCASIONAL FINE POORLY GRADED (SP) LENSES-[35" THICK]		
B3		SILT (ML) — NON-PLASTIC TO LOW PLASTICITY, BLACK, MOIST, LOOSE RELATIVE DENSITY, FILL TOPSOIL, SOME ORGANICS-[12" THICK]		
	858.54	FILL, HOT MIX ASPHALT-[3 1/2" THICK]		
		LEAN CLAY (CL) — MEDIUM PLASTICITY, GREENISH-GRAY TO GRAY, MOIST, STIFF CONSISTENCY, OCCASIONAL GRAVEL, WITH OCCASIONAL BLACK SILT (ML) POCKETS		
		LEAN CLAY (CL) — MEDIUM PLASTICITY, GREENISH-GRAY TO GRAY, MOIST, SOFT TO VERY SOFT CONSISTENCY, OCCASIONAL GRAVEL, WITH OCCASIONAL BLACK SILT (ML) POCKETS		
B2		SILTY SAND (SM) — FINE GRAINED, NON-PLASTIC TO LOW PLASTICITY FINES, GRAY TO BROWN, MOIST, LOOSE RELATIVE DENSITY, TRACE TO LITTLE GRAVEL		
	859.57	FILL, HOT MIX ASPHALT-[3 1/2" THICK]		
		SILTY SAND WITH GRAVEL (SM) — FINE GRAINED, NON-PLASTIC TO LOW PLASTICITY FINES, BROWN, FILL, CRUSHED GRAVEL BASE COURSE-[15 1/2" THICK]		
		LEAN CLAY (CL) — MEDIUM PLASTICITY, GREENISH-GRAY TO GRAY, MOIST, VERY STIFF CONSISTENCY, TOPSOIL-[10" THICK]		
B1		FILL, CRUSHED GRAVEL BASE COURSE-[21" THICK] MOIST, VERY STIFF CONSISTENCY, TOPSOIL-[26" THICK]		
	858.62	FILL, HOT MIX ASPHALT-[3" THICK]		
		SILTY SAND WITH GRAVEL (SM) — FINE GRAINED, NON-PLASTIC TO LOW PLASTICITY FINES, BROWN, MOIST, LOOSE RELATIVE DENSITY, FILL, CRUSHED GRAVEL BASE COURSE-[15 1/2" THICK]		
		SILTY SAND (SM) — FINE GRAINED, NON-PLASTIC TO LOW PLASTICITY FINES, GRAY TO BROWN, WET, MEDIUM DENSE RELATIVE DENSITY, TRACE TO LITTLE GRAVEL		

BORINGS PERFORMED BY: SOIL ENGINEERING SERVICES, INC.
DECEMBER 6 & 7, 2016

Mead & Hunt
Mead and Hunt, Inc.
2440 Deming Way
Middleton, WI 53562
phone: 608-273-6380
meadhunt.com



These documents shall not be used for any purpose or project for which it is not intended. Mead & Hunt shall be indemnified by the client and held harmless from all claims, damages, liabilities, losses, and expenses, including attorneys' fees and costs, arising out of such misuse or reuse of the documents. In addition, unauthorized reproduction of these documents, in part or as a whole, is prohibited.

**DANE COUNTY REGIONAL AIRPORT
CONSTRUCT EMPLOYEE PARKING
LOT AND MISC. IMPROVEMENTS
4000 INTERNATIONAL LANE
MADISON, WI 53704**

ISSUED

NO.	DESCRIPTION
864	
862	
860	
858	
856	
854	
852	
850	
848	
846	

BID SET

PROJ. NO.:	MSN 1002
MMH NO.:	2309936-161532.01
DATE:	JUNE 23, 2017
DESIGNED BY:	LJN
DRAWN BY:	DLU
CHECKED BY:	CAR
DO NOT SCALE DRAWINGS	

These documents shall not be used for any purpose or project for which it is not intended. Mead & Hunt shall be indemnified by the client and held harmless from all claims, damages, liabilities, losses, and expenses, including attorney's fees and costs, arising out of such misuse or reuse of the documents. In addition, unauthorized reproduction of these documents, in part or as a whole, is prohibited.

**DANE COUNTY REGIONAL AIRPORT
 CONSTRUCT EMPLOYEE PARKING
 LOT AND MISC. IMPROVEMENTS**
 4000 INTERNATIONAL LANE
 MADISON, WI 53704

ISSUED

870
868
866
864
862
860

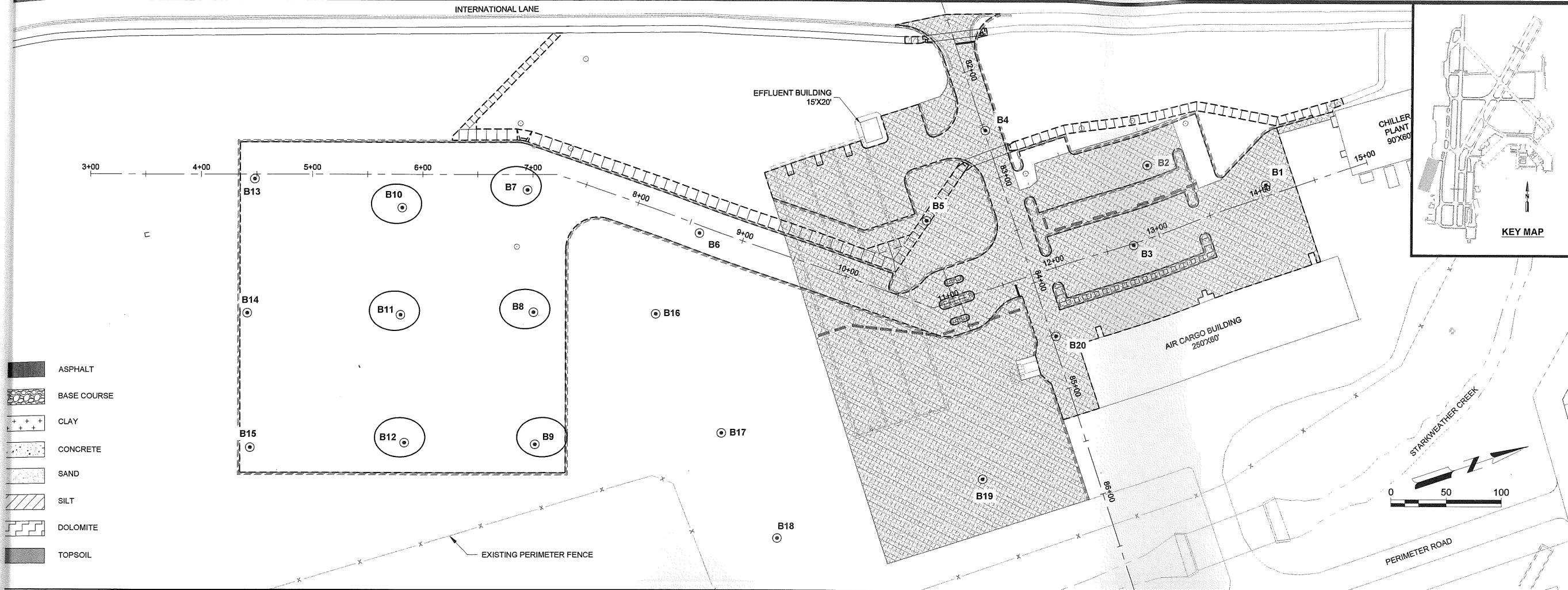
BID SET

PROJ NO: MSN 1002
 MSN NO: 2309936-161532.01
 DATE: JUNE 23, 2017
 DESIGNED BY: LUN
 DRAWN BY: DLU
 CHECKED BY: CAR
DO NOT SCALE DRAWINGS

SHEET CONTENTS
 PLAN & LOG OF SOIL BORINGS

SHEET NO 11 of 76

B-052



- ASPHALT
- BASE COURSE
- CLAY
- CONCRETE
- SAND
- SILT
- DOLOMITE
- TOPSOIL

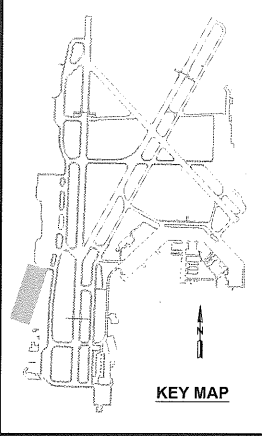
BORING NO.	DEPTH (ft)	SOIL DESCRIPTION
B12	0-2	LEAN CLAY (CL) — MEDIUM PLASTICITY, DARK BROWN TO BLACK, MOIST, FILL TOPSOIL, SOME ORGANICS-[2" THICK]
	2-7	LEAN CLAY (CL) — MEDIUM PLASTICITY, BROWN AND BLACK, MOIST, MEDIUM TO HARD CONSISTENCY, FILL, OCCASIONAL TO LITTLE GRAVEL, OCCASIONAL TO LITTLE SAND, WITH SILTY CLAYEY SAND (SC/SM) AND SILT (ML) SEAMS, MIXED WITH LITTLE TOPSOIL-[7'-10" THICK]
	7-10	LEAN CLAY (CL) — MEDIUM PLASTICITY, BROWN WITH GRAY MOTTLING, MOIST, STIFF TO VERY STIFF CONSISTENCY, TRACE ORGANICS, WITH SILT (ML) SEAMS
B11	0-6	LEAN CLAY (CL) — MEDIUM PLASTICITY, BROWN AND BLACK, MOIST, STIFF TO VERY STIFF CONSISTENCY, FILL, OCCASIONAL TO LITTLE GRAVEL, OCCASIONAL TO LITTLE SAND, WITH SILTY CLAYEY SAND (SC/SM) AND SILT (ML) SEAMS, MIXED WITH LITTLE TOPSOIL-[7'-8" THICK]
	6-24	MOIST, VERY STIFF CONSISTENCY, TOPSOIL-[24" THICK]
B10	0-12	LEAN CLAY (CL) — MEDIUM PLASTICITY, DARK BROWN TO BLACK, ORGANIC ODOR, MOIST, FILL TOPSOIL, SOME ORGANICS-[12" THICK]
	12-4	LEAN CLAY (CL) — MEDIUM PLASTICITY, BROWN AND BLACK, MOIST, VERY STIFF CONSISTENCY, FILL, OCCASIONAL TO LITTLE GRAVEL, OCCASIONAL TO LITTLE SAND, WITH SILTY CLAYEY SAND (SC/SM) AND SILT (ML) SEAMS, MIXED WITH LITTLE TOPSOIL-[4'-8" THICK]
	4-8	LEAN CLAY (CL) — MEDIUM PLASTICITY, GREENISH-GRAY TO GRAY, MOIST, VERY STIFF CONSISTENCY, OCCASIONAL GRAVEL, WITH BROWN AND BLACK SILT (ML) SEAMS AND LAYERS
B9	0-7	LEAN CLAY (CL) — MEDIUM PLASTICITY, BROWN WITH GRAY MOTTLING, MOIST, VERY STIFF CONSISTENCY, WITH SILT (ML) SEAMS
	7-0	LEAN CLAY (CL) — MEDIUM PLASTICITY, GREENISH-GRAY TO GRAY, MOIST, STIFF TO VERY STIFF CONSISTENCY, OCCASIONAL GRAVEL, WITH OCCASIONAL BLACK SILT (ML) POCKETS
B8	0-6	LEAN CLAY (CL) — MEDIUM PLASTICITY, BROWN AND BLACK, MOIST, VERY STIFF TO HARD CONSISTENCY, FILL, OCCASIONAL TO LITTLE GRAVEL, OCCASIONAL TO LITTLE SAND, WITH SILTY CLAYEY SAND (SC/SM) AND SILT (ML) SEAMS, MIXED WITH LITTLE TOPSOIL-[7'-0" THICK]
	6-24	SANDY LEAN CLAY (CL) — MEDIUM PLASTICITY, BROWN WITH BLACK, MOIST, STIFF CONSISTENCY, FILL, TRACE GRAVEL-[24" THICK]
B7	0-12	LEAN CLAY (CL) — MEDIUM PLASTICITY, BLACK, MOIST, FILL TOPSOIL, SOME ORGANICS-[12" THICK]
	12-4	LEAN CLAY (CL) — MEDIUM PLASTICITY, BROWN AND BLACK, MOIST, STIFF TO MEDIUM CONSISTENCY, FILL, MIXED WITH TOPSOIL-[4'-6" THICK]
B6	0-6	LEAN CLAY (CL) — MEDIUM PLASTICITY, BROWN AND BLACK, MOIST, STIFF TO MEDIUM CONSISTENCY, FILL, MIXED WITH TOPSOIL-[4'-6" THICK]
	6-8	LEAN CLAY (CL) — MEDIUM PLASTICITY, BROWN AND BLACK, MOIST, STIFF TO MEDIUM CONSISTENCY, FILL, MIXED WITH TOPSOIL-[4'-6" THICK]
B5	0-12	LEAN CLAY (CL) — MEDIUM PLASTICITY, BROWN AND BLACK, MOIST, STIFF TO MEDIUM CONSISTENCY, FILL, MIXED WITH TOPSOIL-[4'-6" THICK]
	12-4	LEAN CLAY (CL) — MEDIUM PLASTICITY, BROWN AND BLACK, MOIST, STIFF TO MEDIUM CONSISTENCY, FILL, MIXED WITH TOPSOIL-[4'-6" THICK]
B4	0-12	LEAN CLAY (CL) — MEDIUM PLASTICITY, BROWN AND BLACK, MOIST, STIFF TO MEDIUM CONSISTENCY, FILL, MIXED WITH TOPSOIL-[4'-6" THICK]
	12-4	LEAN CLAY (CL) — MEDIUM PLASTICITY, BROWN AND BLACK, MOIST, STIFF TO MEDIUM CONSISTENCY, FILL, MIXED WITH TOPSOIL-[4'-6" THICK]
B3	0-12	LEAN CLAY (CL) — MEDIUM PLASTICITY, BROWN AND BLACK, MOIST, STIFF TO MEDIUM CONSISTENCY, FILL, MIXED WITH TOPSOIL-[4'-6" THICK]
	12-4	LEAN CLAY (CL) — MEDIUM PLASTICITY, BROWN AND BLACK, MOIST, STIFF TO MEDIUM CONSISTENCY, FILL, MIXED WITH TOPSOIL-[4'-6" THICK]
B2	0-12	LEAN CLAY (CL) — MEDIUM PLASTICITY, BROWN AND BLACK, MOIST, STIFF TO MEDIUM CONSISTENCY, FILL, MIXED WITH TOPSOIL-[4'-6" THICK]
	12-4	LEAN CLAY (CL) — MEDIUM PLASTICITY, BROWN AND BLACK, MOIST, STIFF TO MEDIUM CONSISTENCY, FILL, MIXED WITH TOPSOIL-[4'-6" THICK]
B1	0-12	LEAN CLAY (CL) — MEDIUM PLASTICITY, BROWN AND BLACK, MOIST, STIFF TO MEDIUM CONSISTENCY, FILL, MIXED WITH TOPSOIL-[4'-6" THICK]
	12-4	LEAN CLAY (CL) — MEDIUM PLASTICITY, BROWN AND BLACK, MOIST, STIFF TO MEDIUM CONSISTENCY, FILL, MIXED WITH TOPSOIL-[4'-6" THICK]

BORINGS PERFORMED BY: SOIL ENGINEERING SERVICES, INC.
 DECEMBER 6 & 7, 2016

EFFLUENT BUILDING
15'X20'

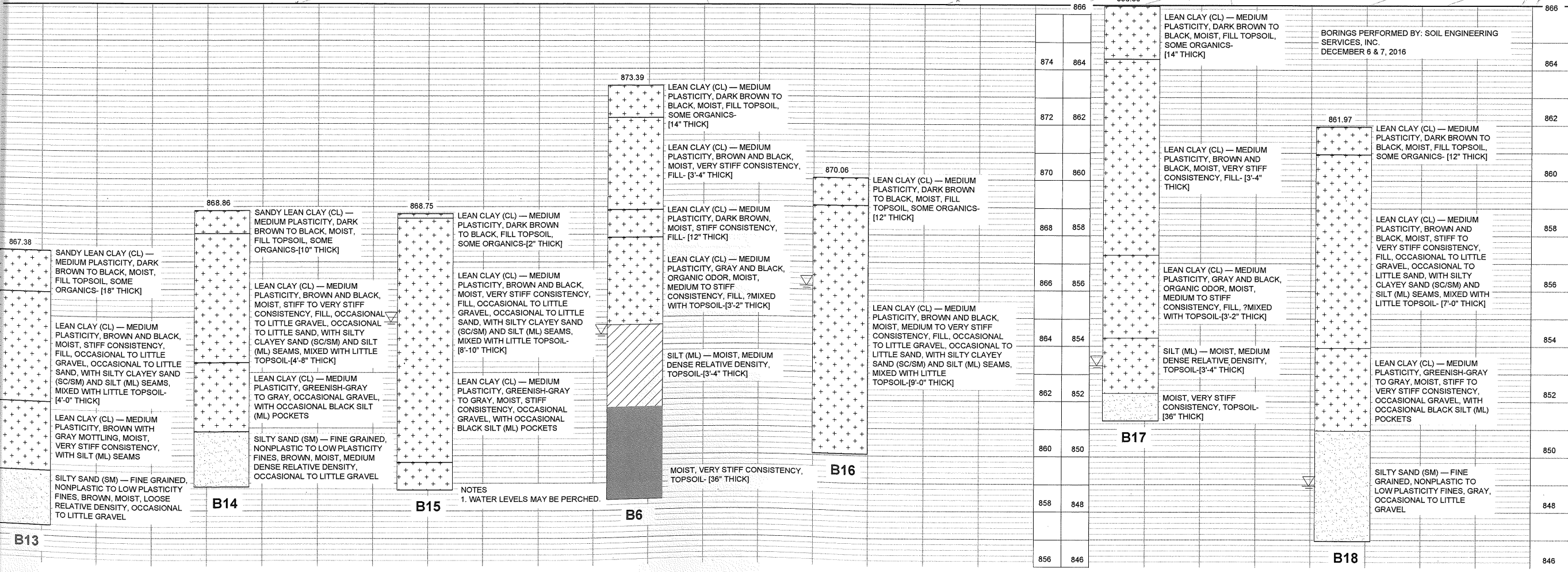
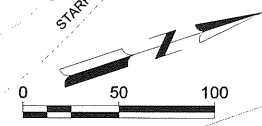
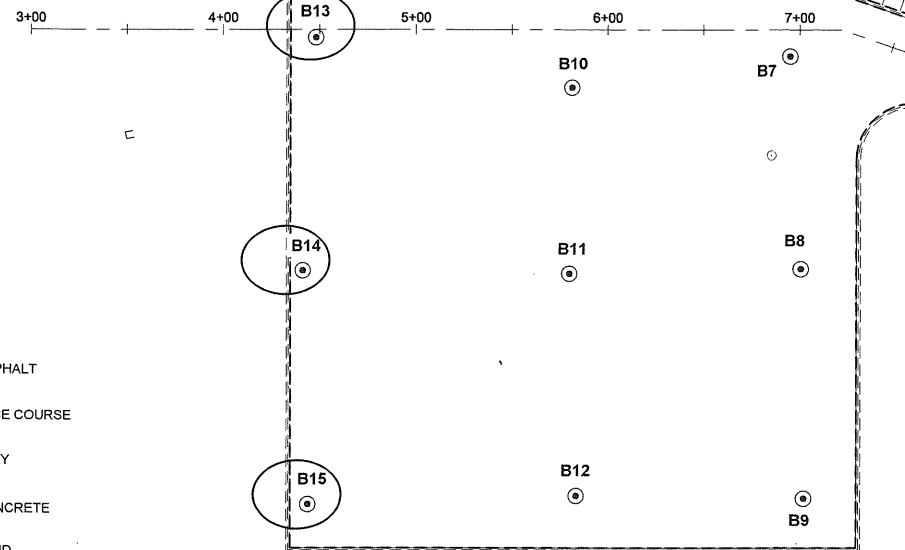
CHILLER PLANT
90'X60'

AIR CARGO BUILDING
250'X60'



These documents shall not be used for any purpose or project for which it is not intended. Mead & Hunt shall be indemnified by the client and held harmless from all claims, damages, liabilities, losses, and expenses, including attorney's fees and costs, arising out of such misuse or reuse of the documents. In addition, unauthorized reproduction of these documents, in part or as a whole, is prohibited.

- ASPHALT
- BASE COURSE
- CLAY
- CONCRETE
- SAND
- SILT
- DOLOMITE
- TOPSOIL



**DANE COUNTY REGIONAL AIRPORT
CONSTRUCT EMPLOYEE PARKING
LOT AND MISC. IMPROVEMENTS**
4000 INTERNATIONAL LANE
MADISON, WI 53704

ISSUED

BID SET

PROJ NO: MSN 1002
MSH NO: 2309936-161532.01
DATE: JUNE 23, 2017
DESIGNED BY: LUN
DRAWN BY: DLU
CHECKED BY: CAR
DO NOT SCALE DRAWINGS

SHEET CONTENTS
PLAN & LOG OF SOIL BORINGS

SHEET NO 12 of 76
B-053