

ADVISORY

Possible Chemical Exposure Hazard

This water contains PFAS

(per- and poly-fluoroalkyl substance)

To protect you, your family, and your pets from potential PFAS exposure:

- Avoid drinking or accidentally swallowing the water or foam.
- Follow advice from the WI Department of Natural Resources to limit eating locally caught fish: dnr.wi.gov/topic/fishing/consumption
- Wash your hands after wading or playing in the water or foam.
- Do not let your pet drink the water or foam and rinse pets after contact with the water or foam to avoid them licking PFAS that may be on their fur.

Touching the water is not a health concern.

This surface water is currently being investigated in accordance with Wisconsin laws.

Spanish Version

Hmong Version

**More health information / Más información de salud /
Cov ntaub ntawv noj qab haus huv ntxiv**

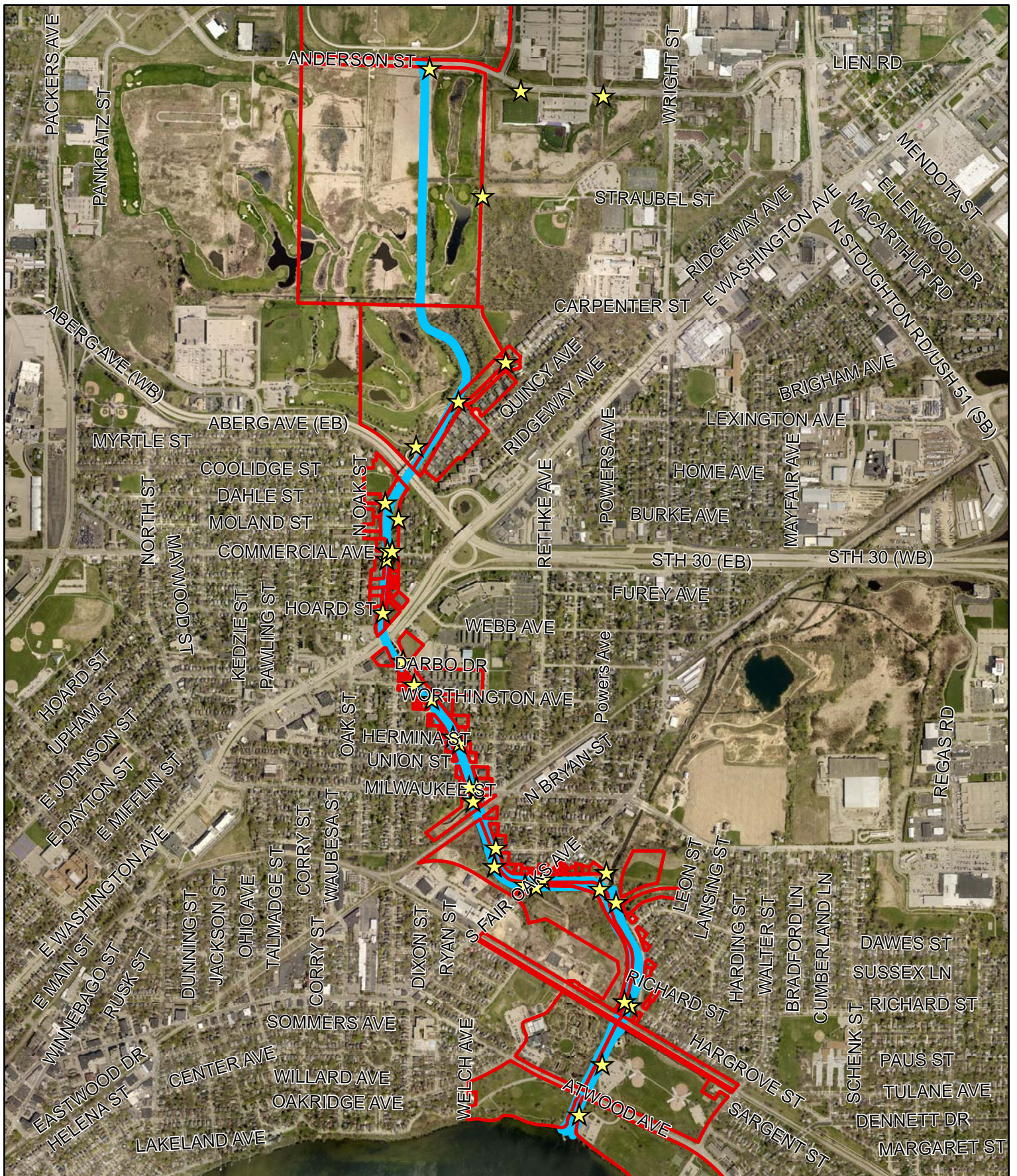
WI Department of Health Services: dhs.wisconsin.gov/chemicals/pfas.htm

Public Health Madison & Dane County: publichealthmdc.com/pfas




Wisconsin Air National Guard: [_ https://dma.wi.gov/DMA/pfos-pfoa](https://dma.wi.gov/DMA/pfos-pfoa)

This surface water is currently being investigated and will be cleaned up in accordance with Wisconsin laws. For more information: WI DNR Bureau for Remediation and Redevelopment Tracking System:

dnr.wi.us (search "BOTW", Activity #02-13-584369)



Legend

-  Sign Locations
-  Parcels
-  Starkweather Creek



Parcels to be Notified and Posting Locations

