



City-County Building, Room 507
210 Martin Luther King, Jr. Boulevard
Madison, WI 53703

Phone (608) 266-4821
Fax (608) 266-4858
www.publichealthmdc.com

October 30, 2019

To Whom It May Concern:

The Wisconsin Department of Natural Resources (DNR) released results of surface water testing for per- and polyfluoroalkyl substances (PFAS) that they conducted along Starkweather Creek and four other locations statewide. PFAS are a group of human-made chemicals used for decades in numerous products, such as non-stick cookware, fast food wrappers, stain-resistant sprays and firefighting foam. According to the U.S. Environmental Protection Agency (EPA), exposure to some PFAS substances above certain levels may increase the risk of adverse health effects, such as thyroid disease, low birthweights and cancer. EPA has established an advisory level of 70 parts per trillion (ppt) for PFAS in drinking water. Results of testing in Starkweather Creek in Madison show elevated levels of PFAS. More details about the test sites can be found in Attachment 1.

This letter is to provide more information about steps residents can take, and additional steps being taken by the City, County, Air National Guard and State DNR to address this ongoing issue.

- Fish tissue samples from the Starkweather Creek outlet to Lake Monona are currently being tested for PFAS with results expected in the spring of 2020. Residents and visitors to Madison should continue to follow the fish consumption advisory from the Wisconsin Department of Natural Resources in place for PCBs and mercury. The advisory recommends limiting fish consumption for children under 15 and women who are breastfeeding, pregnant, or may become pregnant. The City, County and Air National Guard are also increasing signage related to PFAS contamination and fish advisories around Starkweather Creek.
- Residents can take action to protect themselves from PFAS and other contaminants while using Madison's waterways:
 - Follow the Dane County fish consumption advisories.
 - Avoid drinking or accidentally swallowing the water or foam.
 - Wash your hands after wading or playing in the water.
 - Do not let your pet drink the creek water or foam and rinse pets after contact with the water to avoid them licking PFAS that may be on their fur.More detailed guidance is available in Attachment 2.
- Signs are being posted along public access points to Starkweather Creek to make creek users aware of the presence of PFAS. Attachment 3 includes the public signage messaging.
- The results of this initial round of PFAS testing in Starkweather Creek do not impact the safety of

Madison's drinking water.

- As the City, County, and State continue to monitor surface and drinking water for PFAS, it is important to note that thousands of PFAS chemicals are in production across the world and people are exposed to these chemicals in a number of ways. To reduce PFAS exposure:
 - Check product labels for ingredients that include the words "fluoro" or "perfluoro."
 - Be aware of packaging for foods that contain grease-repellent coatings. Examples include microwave popcorn bags and fast food wrappers and boxes.
 - Avoid stain-resistance treatments. Choose furniture and carpets that aren't marketed as "stain-resistant," and don't apply finishing treatments to these or other items. Choose alternatives to clothing that has been treated for water or stain resistance, such as outerwear and sportswear, luggage, and camping and sporting equipment.
 - Avoid or reduce use of non-stick cookware and stop using products if non-stick coatings show signs of deterioration.

For more information on PFAS contamination, visit www.dnr.wi.gov/topic/Contaminants/PFAS.html.

For more information about public health related to PFAS, visit www.dhs.wisconsin.gov/chemical/pfas.htm.

Information about fish consumption advisories can be found at www.dnr.wi.gov/topic/fishing/consumption

For more information, please contact Jeff Lafferty at jlafferty@publichealthmdc.com or (608) 242-6491.

Sincerely,

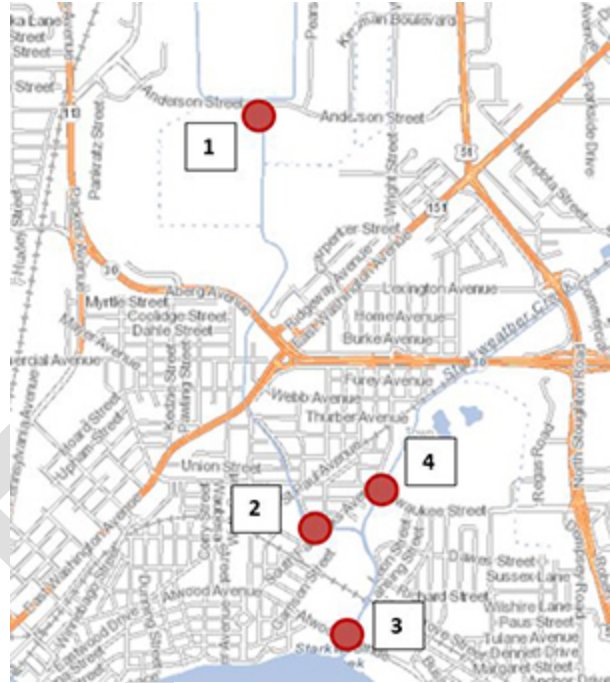
Janel Heinrich
Director

Attachments

Attachment 1: DNR Testing of Starkweather Creek

Monitoring locations:

1. West Branch Starkweather Creek at Anderson St.
2. West Branch Starkweather Creek at Fair Oaks Ave.
3. West Branch Starkweather Creek at Atwood Ave.
4. East Branch Starkweather Creek at Milwaukee St.



Surface Water PFAS (PFOA and PFOS) Sample Results*

		Sampling Locations			
		#1	#2	#3	#4
6/20/19 Analyte (ng/l)	PFOA	23	43	27	2.6
	PFOS	79	270	160	2.6
7/17/19 Analyte (ng/l)	PFOA	30	40	24	2.1
	PFOS	180	360	180	1.8
8/16/19 Analyte (ng/l)	PFOA	20	34	18	2.3
	PFOS	71	220	120	1.5

*Note these are surface water results and do not reflect PFAS in drinking water. Drinking water comes from deep groundwater aquifers.

Attachment 2: Department of Health Services Guidance

During recreational activities in lakes and creeks, people can be exposed to PFAS by swallowing and touching the water. Accidental swallowing (ingestion) is the main source of PFAS exposure from surface water; this is especially true for children as they swallow more water than adults during recreational activities. However, touching (dermal) is a minor source of PFAS exposure. Available information suggests that as a class of chemicals, PFAS do not easily enter through the skin, although the extent which they do cross the skin depends on the chemical's characteristics and some PFAS are more readily absorbed than others. This means that people are not likely to absorb PFAS through the skin while swimming, splashing, or wading in the waters.

There is a small chance of swallowing (ingestion exposure) PFAS in surface water during recreational activities. Accidentally swallowing water is unlikely to cause someone to become sick. However, we recommend avoiding unnecessary exposure to PFAS to prevent any potential long-term health effects. Touching (dermal exposure) is not a major source of exposure from surface water and should not lead to health effects. However, we recommend people wash their hands after touching surface water to avoid accidentally ingesting PFAS through hand-to-mouth activity. Currently, we do not know how much PFAS is present in fish caught from this area. However, following the current statewide fish consumption advisory will limit your PFAS exposure.

Recommendations:

To best protect people from potential PFAS exposure from surface water, DHS recommends people avoid drinking or accidentally swallowing water and wash after wading or playing in the water. We also recommend pets to be thoroughly rinsed off after contact with water to avoid swallowing the PFAS that may be on their fur.

Attachment 3: Public Signage Advisory Language

ADVISORY
Possible Chemical Exposure Hazard
This water contains PFAS
(per- and poly-fluoroalkyl substance)

To protect you, your family, and your pets from potential PFAS exposure:

- Avoid drinking or accidentally swallowing the water or foam.
- Follow advice from the WI Department of Natural Resources to limit eating locally caught fish: dnr.wi.gov/topic/fishing/consumption
- Wash your hands after wading or playing in the water.
- Do not let your pet drink the water or foam and rinse pets after contact with the water or foam to avoid them licking PFAS that may be on their fur.

Touching the water is not a health concern.

This surface water is currently being investigated in accordance with Wisconsin laws.

**More health information / Más información de salud /
Cov ntaub ntawv noj qab haus huv ntxiv**
WI Department of Health Services: dhs.wisconsin.gov/chemicals/pfas.htm
Public Health Madison & Dane County: publichealthmdc.com/pfas
Wisconsin Air National Guard: <https://dma.wi.gov/DMA/pfos-pfoa>

This surface water is currently being investigated and cleaned up in accordance with Wisconsin laws.

**For more information: WI DNR Bureau for Remediation and Redevelopment Tracking System:
dnr.wi.us (search "BOTW", Activity #02-13-584369)**



ADVISORY

Possible Chemical Exposure Hazard

This water contains PFAS

(per- and poly-fluoroalkyl substance)

To protect you, your family, and your pets from potential PFAS exposure:

- Avoid drinking or accidentally swallowing the water or foam.
- Follow advice from the WI Department of Natural Resources to limit eating locally caught fish: dnr.wi.gov/topic/fishing/consumption
- Wash your hands after wading or playing in the water or foam.
- Do not let your pet drink the water or foam and rinse pets after contact with the water or foam to avoid them licking PFAS that may be on their fur.

Touching the water is not a health concern.

This surface water is currently being investigated in accordance with Wisconsin laws.

Spanish Version

Hmong Version

**More health information / Más información de salud /
Cov ntaub ntawv noj qab haus huv ntxiv**

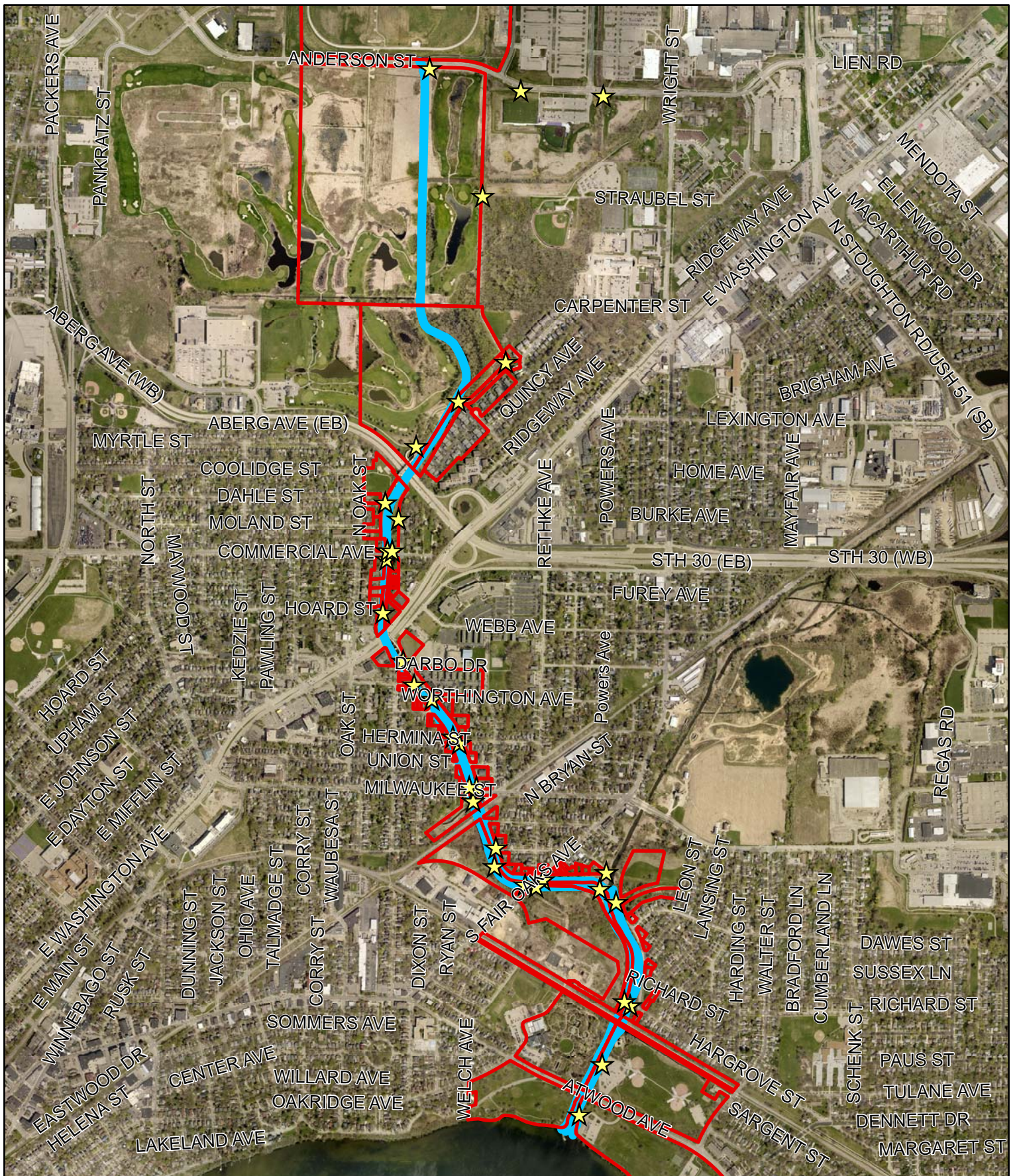
WI Department of Health Services: dhs.wisconsin.gov/chemicals/pfas.htm

Public Health Madison & Dane County: publichealthmdc.com/pfas




Wisconsin Air National Guard: [_ https://dma.wi.gov/DMA/pfos-pfoa](https://dma.wi.gov/DMA/pfos-pfoa)

This surface water is currently being investigated and will be cleaned up in accordance with Wisconsin laws. For more information: WI DNR Bureau for Remediation and Redevelopment Tracking System:

dnr.wi.us (search "BOTW", Activity #02-13-584369)



Legend

-  Sign Locations
-  Parcels
-  Starkweather Creek



Parcels to be Notified and Posting Locations

