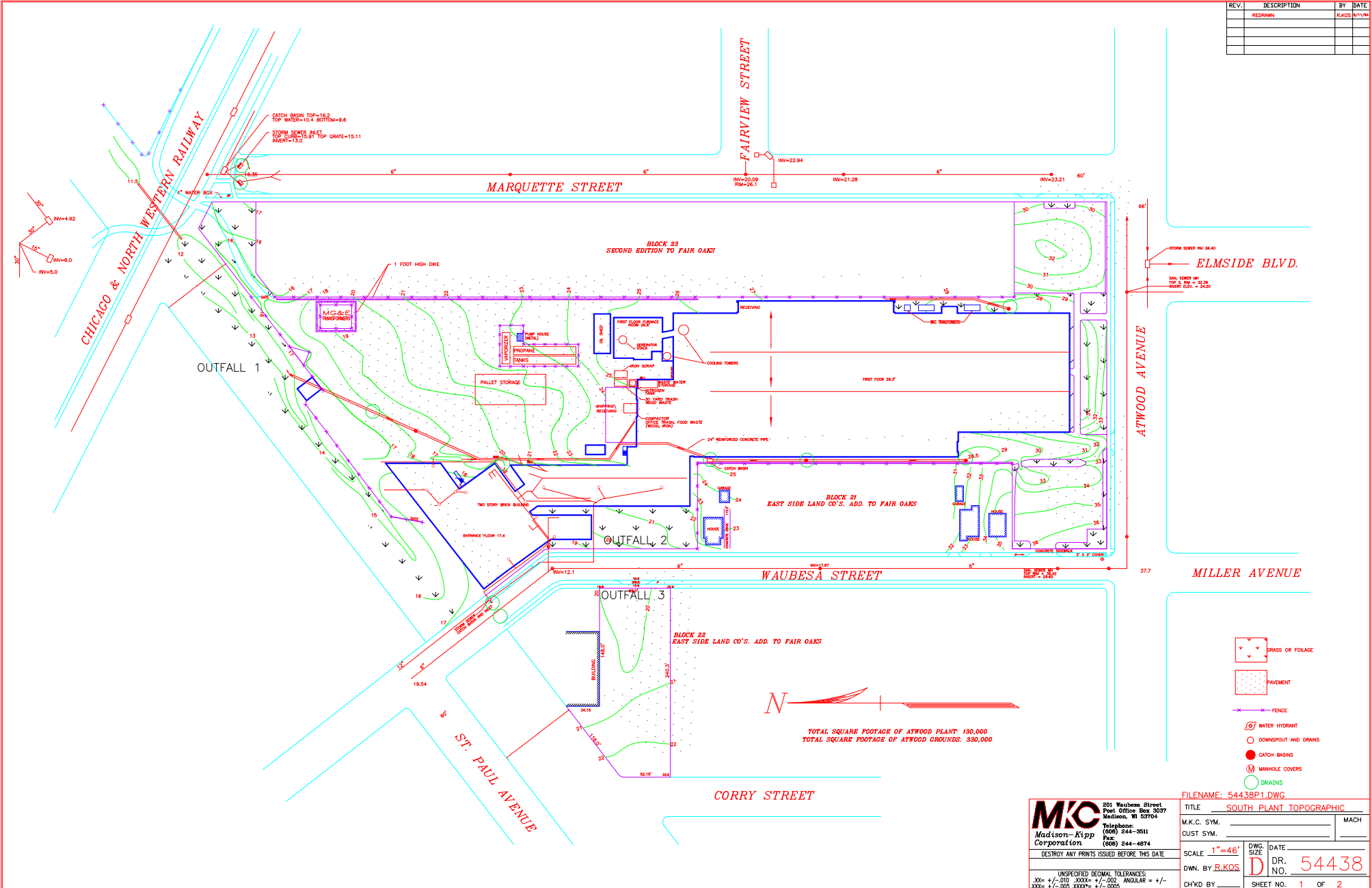


REV.	DESCRIPTION	BY	DATE
	REDRAWN	R.KOS	8/1/98



TOTAL SQUARE FOOTAGE OF ATWOOD PLANT: 130,000
 TOTAL SQUARE FOOTAGE OF ATWOOD GROUNDS: 330,000

- GRASS OR FOLIAGE
- PAVEMENT
- FENCE
- WATER HYDRANT
- DOWNSPOUT AND DRAINS
- CATCH BASINS
- MANHOLE COVERS
- DRAINS

FILENAME: 5443BP1.DWG

TITLE	SOUTH PLANT TOPOGRAPHIC	
M.K.C. SYM.		MACH
CUST SYM.		
SCALE	1"=46'	DATE
DWN. BY	R.KOS	DR. NO. 54438
CH'KD BY		SHEET NO. 1 OF 2

M/K Corporation
 2011 Waubesa Street
 Post Office Box 3037
 Madison, WI 53704
 Telephone: (608) 244-8511
 Fax: (608) 244-4674

DESTROY ANY PRINTS ISSUED BEFORE THIS DATE

UNSPECIFIED DECIMAL TOLERANCES:
 .XX= +/- .010 .XXX= +/- .002 ANGULAR = +/- .XXX= +/- .005 .XXXX= +/- .0005